

FeRFA E-Newsletter



February 2021

CORONAVIRUS (Covid-19)

Easing Coronavirus Restrictions

Following publication of the [roadmap](#) for lifting lockdown restrictions in England, the Government has released a series of [posters](#) showing at a glance which restrictions will be relaxed at each of the four steps of the roadmap. There will be at least five weeks between each step and the indicative 'no earlier than' dates are subject to change if the four specific tests are not met.

The Scottish Government has released its [COVID-19 Strategic Framework Update](#) which sets out a phased approach to easing lockdown restrictions back to the previous geographical tiered level system by the end of April. The current restrictions will be relaxed in four stages, each at least three weeks apart subject to the six conditions within the framework being met. The earliest date for non-essential work to be resumed in people's homes is 26 April.

Keep up to date with the latest Coronavirus news via [our dedicated webpage](#) and on our social media channels (@FeRFAResin). Keep an eye out for these updates, and if we can be of any assistance please [contact the FeRFA office](#).

BREXIT

Brexit. The new rules are here

Keep your business moving. Doing business with Europe has changed. You need to follow new rules on exports, imports, tariffs, data and hiring. You can use the [Brexit checker](#) to get a personalised list of actions.

[Click here for more information.](#)

We will be providing members with guidance on Brexit via [our dedicated webpage](#) and by email over the coming weeks. Keep an eye out for these updates, and if we can be of any assistance please [contact the FeRFA office](#).

MEMBER EXCLUSIVE WEBINAR

Reverse Charge VAT : Managing change

FeRFA members are invited to join a webinar on **10th March at 2:00pm** in collaboration with The Tile Association, Contract Flooring Association and Finishes and Interiors Sector, focusing on the issues and challenges associated with the implementation of the Domestic Reverse Charge VAT planned for the 1st March 2021. The webinar hosted by VAT expert Liz Bridge of JTC will take you through how to manage Reverse Charge VAT in your business and will include plenty of opportunity to discuss any challenges you are experiencing.

To register for this webinar please contact the [FeRFA office](#) by Friday 5th March. Following registration, you will receive further information and the link to join.

KEEP YOUR TECHNICAL KNOWLEDGE UP TO DATE

Those who make best use of any current opportunities to upskill themselves will be best placed to take advantage of the expected recovery in business when it comes.

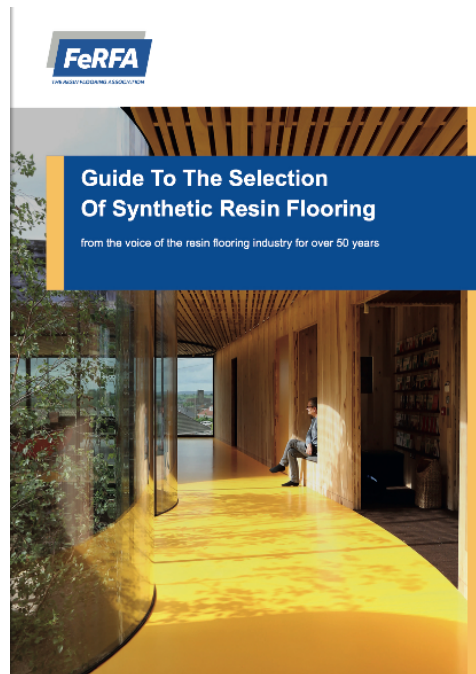
FeRFA has several technical publications online some of which can be easily accessed in a page-turning format, so that they are read just like a hard copy publication.

Please click [here](#).

Guide to the Selection of Synthetic Resin Flooring

Synthetic resin flooring is classified into eight specific types, each exhibiting its own performance characteristics. The FeRFA Guide to the Selection of Resin Flooring provides an overview of the features and characteristics of each type, providing general guidance on potential suitability of each type under various conditions of service.

To access the guide please click [here](#).



① Selection Of Flooring To Be Applied

It is essential that, at the design and construction stages, there should be full consultation with the manufacturer of the flooring product and/or the specialist flooring contractor to ensure that the product to be selected is entirely suited for the conditions with every application and in a frequent review. Consideration should therefore be given to whether the following are applicable:

- Intended use of the synthetic resin flooring including the type, extent and frequency of trafficking;
- Type of loading, static or dynamic, and severity of impact;
- Details of all chemicals, including those used for cleaning or sterilising, which could come into contact with the floor and solvent, frequency and extent of use of hygiene;
- Temperatures that the flooring is required to withstand in normal service or as part of the cleaning operations and whether exposure is by radiant or conductive heat or by direct contact;
- Colour, uniformity and retention, aesthetics and decorative effects;
- Extent to which the flooring will be exposed to direct sunlight or ultraviolet light;
- Compliance with hygiene or food industry requirements;
- Special requirements, such as slip resistance or static controlled characteristics;
- Expected life of the flooring;
- Thickness of flooring to be retained;
- Time available for the application and curing of the flooring;
- Age, specification, nature, extent and nature of the base, including information about any previous use of the floor which could affect adhesion, and any proprietary treatment required;
- Health & safety and environmental issues during application and in service.

For further information please refer to BS 8204-4 - Screeds, bases and in situ floorings, Synthetic resin floorings, Code of practice.



② Types Of Synthetic Resin Flooring

Synthetic resin flooring is classified into eight specific types, each exhibiting its own particular performance characteristics. A variety of materials, resins, typically epoxy, polyurethane and methacrylate can be formulated to produce the different resin types. BS 8204-4, Section 5.2, classifies the types, varying in thickness and surface finish, as follows:

Type	Name	Description	Duty	Typical Thickness
1	Base seal	Applied to bare or concrete, (usually solvent or solvent-free)	Light	Up to 150 µm
2	Floor coating	Applied in thin or more coats, (usually solvent-free)	Light/Medium	150µm to 375 µm
3	High build floor coating	Applied in thin or more coats, (usually solvent-free)	Medium	380µm to 520µm
4	Multi-layer flooring	Aggregate dressed systems based on multiple layers of floor coatings or thin applied floor coats, often classified as 'sandwich' systems	Medium/Heavy	> 7 mm
5	Flow applied flooring	Often referred to as 'ice creaming' or 'ice creaming' flooring and having a smooth surface	Medium/Heavy	2 mm to 3 mm
6	Roll-on concrete flooring	Thick, dense, heavily filled systems, generally incorporating a surface coating to enhance durability and provide a smooth surface	Medium/Heavy	> 4 mm
7	Heavy duty concrete flooring	Having a smooth surface	Heavy/Very Heavy	< 1 mm to 6 mm
8	Heavy duty resin flooring	Thick, dense, aggregate filled systems effectively impregnated throughout their thickness	Very Heavy	> 6 mm

Some of the types of flooring may be produced with special decorative effects by the incorporation of coloured particles or flakes in the surface. Reinforced resin flooring (if used) requires aggregate to be protected from sunlight. Reinforced resin flooring of Types 6 and 8, slip resistant or anti-static treated or versions of these categories may also be available.

The following tables have been produced to explain the relationship between the properties available within a particular flooring type and the conditions under which that flooring type will be applied and used in service. The guidance of the manufacturer should always be sought before specifying any type of resin floor.

TRAINING NEWS



FeRFA Resumes Training

We are now restarting the In - Situ Resin Flooring SAP training scheme. Two new groups are set to commence training in March and we are currently inviting applications for our September intake.

The courses run for 18 months covering a mix of formal off-site instruction alongside supervised on-the-job training at employer level with a final assessment by a CITB approved assessor.

All courses lead to an NVQ Level 2 qualification and the blue CSCS Skilled Worker card. Substantial grant funding is available for eligible CITB levy payers. Spaces are limited so don't delay.

Contact the [FeRFA office](#) for more information.

NEW MEMBER

FeRFA would like to welcome our new member:

CJ Surfaces Ltd

All aspects of floor preparation including diamond grinding and floor planning. Installation of industrial sub-floors including polymer modified screeds, flowing liquid screeds and rapid cure Polyurethane screeds. Installation of high performance resin systems such as epoxy and PU floor coatings, self smoothers, decorative screeds, crack and joint repairs and demarcation and lining. We also undertake installation of drainage and civil works.

Click [here](#) for more info



ASSOCIATE SPOTLIGHT

This month, FeRFA are highlighting three more of our Associate members. Associate members are companies who are involved indirectly with the manufacture, application and maintenance of resin flooring such as Surface Preparation Plant Suppliers, Chemical Suppliers to Manufacturer members, floor cleaning machinery suppliers, test houses etc.



Boud Minerals provide functional, decorative and lightweight mineral fillers for resin and cementitious flooring and a number of other industries and applications. Boud Minerals provide the



Stort Chemicals Ltd is one of the leading independent speciality chemical distributors to the Coatings and Fragrance & Flavours industries in the UK & Ireland. Founded in 1981, we are still



SureSet, the UK's manufacturer of permeable resin bound paving, supplying high quality paving surfaces for residential, commercial and public sector since 1997 with a 21 year guarantee.

following services: Pigmented coatings, technical coatings, own label packaging, granular blending, cementitious blending	100% family-owned, recently welcoming the third generation into the company.	Offering a full supply and installation service, the company's extensive range of products has brought life to projects around the globe.
01406 351988	01279 755 151	01985 841180
sales@boud.com	sales@stortchemicals.co.uk	mail@sureset.co.uk
Click here for more info.	Click here for more info.	Click here for more info.



Britain's construction training body pledges pre-Covid rates

The training body for British construction is proposing to keep rates at pre-Covid levels as it launches a wide-reaching consultation into its funding proposals.

A six-week consultation into how CITB raises its Levy – the funding needed from the industry for the training body to provide its support – begins on Monday (1 March).

The consultation will include a range of virtual events, and once feedback on the draft Levy Proposals is in, CITB will proceed to Consensus this summer. This will see a representative sample of 4,000 Levy-paying employers asked for their agreement on plans to raise this funding for the next three years.

[Read more here.](#)

Levy registered employers can take part in the consultation from Monday 1 March to Sunday 11 April at www.citb.co.uk/levyconsultation. Employers can register for virtual events at www.citb.co.uk/spring2021events.

Consensus will take place from Monday 14 June to Sunday 15 August, with more information available at www.citb.co.uk/consensus2021



Reverse VAT

Reverse VAT comes into force next Monday 1 March and members should ensure they are prepared. Build UK has produced a [checklist](#) setting out the actions that should be taken,

including the information that must be included on invoices, and our [practical guide](#) provides an overview of the legislation.

Common Assessment Standard

Build UK is getting ready to roll out the new industry pre-qualification (PQ) system with an initial group of Contractor members.

They have reached agreement with the first assessment bodies - Achilles, CHAS and Constructionline - to launch the new data sharing solution which will enable Contractors and Clients to start specifying the Common Assessment Standard for their supply chains.

Once the new system is fully up and running, companies will only need to be certified once a year, and Contractors and Clients will no longer need to specify a particular Recognised Assessment Body.

Further information about the Common Assessment Standard is available [here](#).

[Read more updates on the website.](#)



HSE announces new Chief Inspector of Buildings

Peter Baker has been appointed as the new Chief Inspector of Buildings to establish and lead the new Building Safety Regulator.

Peter is currently HSE's Director of Building Safety and Construction and will take up the new post to oversee the introduction of the new regime with immediate effect.

As the newly appointed Chief Inspector of Buildings, Peter will act as the face and voice of the BSR, and work to shape and lead the implementation of a new regulatory system for the safety and standard of buildings in England.

Working with other regulators including Local Authorities and the Fire & Rescue Services, he will develop approaches on working together to implement the new regulatory regime in practice.

Once the BSR is established, Peter will also act as the head of profession for building control professionals to drive a culture of consistent, proportionate and targeted regulatory decision making that ensures high standards of safety and quality in buildings.

Find out [more](#) about the new Building Safety Regulator.

MEMBER BENEFITS

PIB Insurance Brokers

	The same professional and friendly service	A new name PIB Insurance Brokers	
---	---	---	---

PIB Insurance Brokers will continue to have access to a wider range of experts across many different industry sectors and insurance types. They'll also be able to draw on the skills of colleagues in PIB Risk Management and PIB Employee Benefits to provide you with important services beyond your insurance needs, should you need them.

If you would like to speak to Howard about your company insurance needs and organize a **free insurance health check** please don't hesitate to contact him at howard.collins@pib-insurance.com or call him on 07775 888933.

FeRFA and PIB Insurance Brokers are excited to offer a facility which gives all your resin floor protection with an **INSURANCE BACKED WARRANTY**. The scheme has been set up so that **all your customers** benefit from the **security** of an **Insurance backed warranty** once you are signed up. You pay an upfront premium based on your annual turnover and then simply register each resin contract online when completed.

[Read more.](#)

CONTRACT REVIEW SERVICE



CONTRACT AND LEGAL SERVICES

FeRFA have partnered with BEB Contract & Legal Services so that as a member of FeRFA, you will get 10% off their Bronze, Silver and Gold packages for bespoke, robust contracts.

Contact BEB on 01604 217365 or email info@bebconsultancy.co.uk and quote FeRFA10 to get started.

BEB are passionate about protecting businesses with watertight contracts. It's what they do, day in, day out. Their approach is hands-on so they'll find out as much as they can about what your business does, how you work and any problem customers you may have had – because it's only when talking about those practical, real-life issues you've encountered that BEB get to really understand how to protect you from those things happening again, in your Ts & Cs.

BEB can help with:

- Terms and conditions

- Sub-contractor agreements
- Shareholder agreements
- Manufacturing and distribution agreements
- GDPR and privacy policies
- And much more

OR are you signing contracts you don't really understand? BEB offer a unique review service where they will check and confirm if the contract you've been sent:

- Protects you fully
- Is clear and unambiguous
- Contains clauses that could be risky for your business

[Click here for more information.](#)

H&S Advice and Business Shield from Stallard Kane Associates



Stallard Kane Associates Ltd provide a support service to SMEs for both Health & Safety and Employment Law. FeRFA members can access its services for free via the Business Shield. All FeRFA members have FREE access to the Business Shield service giving you:

- **FREE** access to the FeRFA Business Shield online portal
- **FREE** and unlimited use of the 24hr hotline
- **FREE** one hour review of your daily activity and associated risks
- **FREE** one hour review of your existing employment contracts.

The dedicated FeRFA Business Shield Account Manager is Barry Nicol, please call him on 07854 938693 for more details.

Read more about Stallard Kane [here](#).

FeRFA Recycling Scheme - are you taking part?



FeRFA partners **Reconomy** can assist you to reduce your total waste management costs, increase your landfill diversion, ensure compliance, under current Environmental Agency legislation, maintain consistency and best practice across all sites and back-office functions. Contact Reconomy on 0800 834 133/01952 211790.

If you are not already submitting your recycling data to FeRFA please start doing this now to qualify for the recycling logo within your FeRFA website entry.

It is easy to do using the datasheet (if not using Reconomy) - only two figures are needed per month - total weight collected and total weight recycled or recovered. This is information that should be provided by your waste collector. If it isn't then ask them why not. The spreadsheet includes a graph, automatically generated from your figures - which you can show to prospective clients

More details on the recycling initiative are [here](#).

You can also read Reconomy's brochure [here](#).

MEMBERS' CASE STUDIES

Suitable slip resistant walkways

Zircon provided the long-term, slip resistant solution for these walkways, ensuring staff have a safe, hard-wearing surface on which to work.

A quick turn around was needed for this well known tool manufacturer. They required their existing flaky painted walkways replacing with a slip resistant surface suitable for a heavy duty traffic crossing.

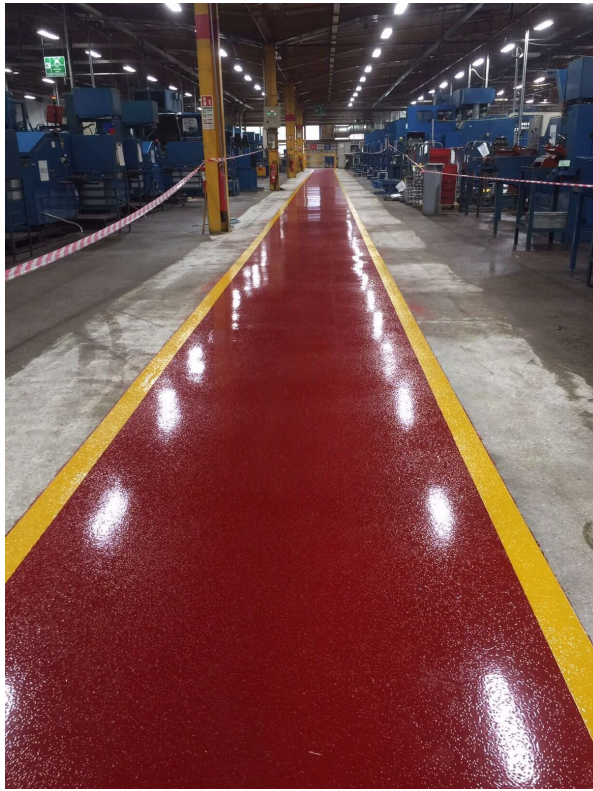
Zircon firstly prepared the area by means of dust free diamond grinding & scarifying.

The first and second coat of Remmers MT100 Primer was installed.

Following on from the primer they installed Epoxyflex PH (2mm) adding an accelerator to speed up the curing times.

Once that was fully cured they installed Remmers Epoxy PH using rollers and brushes, and then broadcast Aluminium Oxide into the wet resin and back rolled it to create a slip resistant surface.

Finally Zircon installed the yellow demarcation lines to create the ends of the walkways.
250m²



IFT Install Flooring at Peter Pan Story Telling Centre

IFT was appointed by Balfour Beatty to prepare the surface and install flooring at Moat Brae, Scotland's National Centre for Children's Literature and Storytelling in Dumfries. The IFT team installed 280 sqm of a liquid-vinyl polyurethane comfort flooring system in the large sweeping atrium positioned at the entrance of the new visitor attraction dedicated to children's literacy and storytelling.

Moat Brae, a Georgian villa dating back to 1823, is home to the terraced gardens that are said to have inspired "Peter Pan", J M Barrie's classic children's story about the free-spirited boy who never grew up. Today, the complex plays host to a children's centre, operated by the Peter Pan Moat Brae Trust, dedicated to literature and storytelling that is expected to attract more than 250,000 visitors per year.

[Read more.](#)



Events

CFJLive Online Expo

On 1st July 2021, Contract Flooring Journal will be hosting their first online expo for the flooring industry. Set to take place from 2pm until 7pm, the expo is intended for contractors, retailers, distributors, architects, developers, facility managers and many more. With more than 100 companies taking part, this is sure to be an incredible face-to-face event in a digital format.

Register for the event [here](#) or [visit the website](#) to find out more.



CHEMUK 2021 Expo

NEW DATES: 15th & 16th September, 2021

NEC, Birmingham, UK

Free To Attend – Admission age: 18+

The CHEMUK EXPO & speaker programme brings together the UK's industrial chemicals, biochemical, chemicals processing & chemical product formulation industries. Targeting chemical & process specialists & sector management teams embracing chemical synthesis, formulation / blending & manufacturing / processing segments

Register your interest [here](#) or [visit the website](#) to find out more.



Surfex

Surfex is organised by OCCA in recognition of the importance of keeping up to date with all aspects relating to innovation, development, manufacture and supply of coatings, inks, adhesives and an array of allied and associated industries.

Surfex brings an essential focus to science and technologies and offers attendees an opportunity to discover new ideas, find answers to technical challenges and source information for immediate use in their working environment.

Surfex is also free to attend.

[Visit the website to find out more.](#)



FeRFA The Resin Flooring Association

FeRFA PO Box 3716, Stone, ST15 9EU

[Unsubscribe](#) - [Unsubscribe Preferences](#)