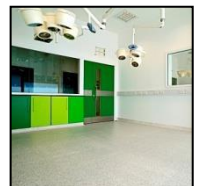
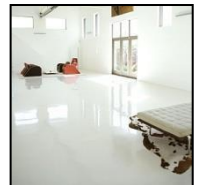


## The Resin Flooring Association

Seamless resin flooring provides a high performance, durable finish to suit both industrial and commercial applications. Specialist hygienic, slip resistant, chemical resistant and anti-static systems are available to satisfy the demanding requirements of today's industrial environments.

FeRFA, the Resin Flooring Association, represents the leading manufacturers, specialist contractors, raw material suppliers and specialist service providers involved in industrial and commercial resin flooring, screeding and surface preparation. FeRFA is the training provider for resin flooring, surface preparation and screeding.



### What FeRFA stands for

<b>UNIQUE</b>	The only organisation dedicated solely to resin flooring
<b>LEADERSHIP</b>	The leading authority for over 50 years on resin flooring systems, FeRFA has led the way in promoting the benefits of resin flooring as a high-performance solution for industrial and commercial applications
<b>AUTHORITY</b>	FeRFA is recognised as the voice of the Resin Flooring Industry by official bodies such as BSI, BBA, RIBA, NBS, CITB, CSCS and Build UK
<b>QUALITY</b>	Members subscribe to FeRFA's Codes of Practice requiring high standards of operation, technical service, health & safety and business integrity
<b>TRAINING</b>	FeRFA delivers specialist applied-skills programmes (SAPs) leading to NVQ/SVQ level 2 and actively promotes "Qualifying the Workforce". Members also employ highly trained operatives with extensive experience in their specialist field
<b>RESPONSIBLE</b>	FeRFA continues to take a leading role in developing national and international standards for resin flooring
<b>INFORMATIVE</b>	The FeRFA series of Guidance Notes provide up to date information and advice on the specification, performance and properties of resin floors. FeRFA's Guide to the Specification and Application of Synthetic Resin Flooring has been approved as assessed in accordance with RIBA CPD Providers Network.
<b>INNOVATIVE</b>	FeRFA encourages the development of technically advanced products and processes in resin flooring and rewards success in these areas
<b>SUSTAINABLE</b>	FeRFA requires its members to operate a clear and concise environmental policy in accordance with current legislation and statutory requirements

Copies of the FeRFA Codes of Practice, Guidance Notes and other information are available to download free from the FeRFA Website at [www.ferfa.org.uk](http://www.ferfa.org.uk).

## The Resin Flooring Association

To assist in the process of choosing the correct product for your particular needs, FeRFA has produced a classification system for the different flooring types. The following classifications are also used in BS 8204-6 - Screeds, bases and in situ floorings - Synthetic resin floorings - Code of practice.

TYPE	NAME	DESCRIPTION	DUTY	TYPICAL THICKNESS
1	Floor seal	Applied in two or more coats. Generally solvent or water borne.	LD	up to 150 µm
2	Floor coating	Applied in two or more coats. Generally solvent free.	LD/MD	150 µm to 300 µm
3	High build Floor coating	Applied in two or more coats. Generally solvent free.	MD	300 µm to 1000 µm
4	Multi-layer flooring	Aggregate dressed systems based on multiple layers of floor coatings or flow-applied floorings, often described as 'sandwich' systems.	MD/HD	> 2 mm
5	Flow applied flooring	Often referred to as 'self-smoothing' or 'self-levelling' flooring and having a smooth surface.	MD/HD	2 mm to 3 mm
6	Resin screed flooring	Trowel-finished, heavily filled systems, generally incorporating a surface seal coat to minimize porosity.	MD/HD	> 4 mm
7	Heavy duty flowable flooring	Having a smooth surface.	HD/VHD	4 mm to 6 mm
8	Heavy duty resin flooring	Trowel-finished, aggregate filled systems effectively impervious throughout their thickness.	VHD	> 6 mm

L (Light duty)	light foot traffic, occasional rubber tyred vehicles
MD (Medium duty)	regular foot traffic, frequent forklift truck traffic, occasional hard plastic-wheeled trolleys,
HD (Heavy duty)	constant fork lift truck traffic, hard plastic wheeled trolleys, some impact
VHD (Very heavy duty)	severe heavily loaded traffic and impact

Further information may be found in the FeRFA publications (listed below), all of which are freely downloadable from FeRFA's web site at [www.ferfa.org.uk](http://www.ferfa.org.uk)

- Guide to the Selection of Synthetic Resin Flooring
- Guide to the Specification and Application of Synthetic Resin Flooring (RIBA CPD Approved)
- Resin Bound Systems for External Applications
- Resin Bonded Surfacing Systems for External Applications
- Guide to the Selection of Deck Waterproofing and Wearing Surfaces for Car Parks (RIBA CPD Approved)
- 'Comfort' resin flooring systems
- Guide to the Specification and Application of Screeds
- Static Controlled Flooring
- Measuring and Managing the Level of Slip Resistance Provided by Resin Floors
- Guide to PPE for Use with In Situ Resin Floors and Surface Preparation
- Guide to Preparing Substrates to Receive Resin Flooring and Finishing of Resin Terrazzo Systems
- Guide to Flowable and Trowel Applied Screeds as Underlayments for Resin Floor Finishes
- Guide to Seamless Resin Terrazzo
- Guide to Cleaning Resin Floors
- Guide to Installing Resin Flooring Systems onto Substrates with a High Moisture Content
- Chemical Resistance of Resin Flooring
- Osmosis in Resin Flooring
- FeRFA Environmental Guide

