



## MESSAGE FROM CEO

The drive to qualify the specialist workforce has been given further support following the decision by the Construction Leadership Council (CLC) to adopt the CSCS logo for the construction industry. All CSCS cards issued will be on the basis of a qualification which in the case of skilled operatives is a minimum NVQ Level 2 qualification. FeRFA and its members are committed to raising standards through the qualification of the specialist workforce, with clear routes in place to gain the appropriate qualification for resin flooring, screeding, surface preparation or supervisory/contract management. Whichever route is taken, FeRFA members have the skills and qualifications to meet the requirements of the CSCS card scheme, which guarantees that the cardholder has achieved the standard necessary to carry out the job.



For more information on routes to qualification, please visit [www.ferfa.org.uk](http://www.ferfa.org.uk)

*Helen McGachie, FeRFA CEO*



## IN THIS ISSUE

- [NEW FERFA MEMBER](#) - welcome to Tramex
- [TRAINING NEWS](#) - new assessors qualified, enrol for NVQ3, NVQ6 and Upskilling
- [RECYCLING](#) - are you taking part in 2016?
- [ASSOCIATE SPOTLIGHT](#) - this month we look at Innoveo and Schluter Systems
- [MEMBER BENEFITS](#) - Business Shield from SKA
- [OTHER NEWS](#) - CSCS Review, National living wage, Filing of CIS returns, H&S and employment advice
- [BUILD UK](#) - take part in the State of Trade Survey
- [MEETINGS & EXHIBITIONS](#) - dates for your diary
- [MEMBERS' NEWS](#) - news stories from FeRFA members



## LATEST NEWS

### NEW FERFA MEMBER

We are delighted this month to welcome Tramex Ltd as associate members.

**Tramex Ltd**

Tramex is a manufacturer of high quality moisture and humidity measurement equipment, producing a range of instruments for the testing of concrete and floor screeds to British & International Standards as well our own patented instant moisture content test which conforms to ASTM F2659 and allows the user to monitor drying of floors and determine best location for further testing when appropriate.



Tramex has been the leader in non-destructive moisture meters for over 40 years and continue to lead the market in quality and innovation.

**Unit F Glencormack Business Park, Kilmacanogue, Co. Wicklow, Ireland / [www.tramexmeters.com](http://www.tramexmeters.com) / +353 1 6814450**



## TRAINING NEWS

### NEW ASSESSORS APPOINTED

We have two new Assessors to support the industry – congratulations to Kevin Cook who has qualified as an assessor Insitu Resin Flooring and Stephen Walker to assess Prepare & Profile substrates. Both assessors will support FeRFA members either through the apprenticeship route or via onsite assessment for experienced operatives.

### NEW APPRENTICESHIPS STARTS IN APRIL

A new group of apprentices will be starting their scheme on 6/7th April. The next apprenticeship start will be in October, the two year schemes (in resin flooring, screeding and surface preparation) lead to an NVQ Level 2 Diploma and the schemes are fully grant funded for CITB registered employers and the grant available is up to £8,970. The cost of the schemes are £6,000 per candidate payable over two years.

More details on the scheme are available at: <http://www.ferfa.org.uk/pdf/Training/ApprenticeshipGrantsAndCosts.pdf>

### NVQ LEVEL 3 OCCUPATIONAL WORK SUPERVISION

The next NVQ level 3 in Occupational Work Supervision will start on **26 & 27 May** (two days) to be held in Nottingham.

If you have any suitable candidates ready to take the next step in their career path, please get in contact with FeRFA for full details on the course.

It is 10 day course which takes three months and consists of 9 Modules (which are taken over 10 days as off-site training). It aims to raise the general standards of supervisors and equips them to deal with the increasing documentation and awareness involving safety and other legislation.

The cost per candidate is £2120 for the courses and £400 towards their students Level 3 NVQ Diploma, and a CITB grant is available of £1950. This includes all the training plus food and accommodation for the training days.

This course meets all the requirements of the UKCG Training Standards for Supervisors.

To book a place on the next course please call FeRFA on **07484 075254**.

For more information on this great grant-funded training opportunity click on this link, which gives details on the modules as well: [www.ferfa.org.uk/pdf/Training/SupervisorTrainingInfo.pdf](http://www.ferfa.org.uk/pdf/Training/SupervisorTrainingInfo.pdf)

### NVQ LEVEL 6 COURSE STARTING ON 17 & 18 MAY

We are enrolling candidates for the next NVQ 6 (Construction Contracting Operations Management) which will start on 17th and 18th May in Nottingham. The course includes 12 days, in two day sessions around 6 weeks apart, in the classroom and at the same time candidates will work, using on-line workbooks, to gather a portfolio of evidence during that time. The process will be fully explained at the first sessions. Once the programme is complete and enough evidence has been gathered candidates will achieve their qualification.

The programme covers the following modules:  
Resource Management

Leadership and Management + Communication and Customer Care  
Health and Safety  
Planning, Programming and Logistics  
Health & Safety (CDM) + Environmental and Sustainability

The course is cost neutral in that the fees are £2,800 + VAT and grants are available for CITB levy payers totalling £2,800. Hotel accommodation can be booked locally to the course if required, at £50 + VAT per person, per night and includes breakfast but no evening meal.

Anyone with candidates wishing to register for the [next NVQL6 programme](#) should get in touch with FeRFA on **07484 075254**.

## FIRST PRACTICAL MODULES FOR SCREEDING APPRENTICES

Screeding apprentices have had their first opportunity to mix and lay screeds as part of their two year NVQL2 training scheme.

The two day course, held at the excellent training facilities of The Preparation Group in Lincoln, included both classroom and practical training on traditional applied screeds. With screeding material kindly donated by Flowcrete, the apprentices set up a mixing station, test the material and laid the screed with reinforcement in various bays, at thicknesses of up to 80 mm. PPE for this session was provided by VI Distribution.

The apprentices will return to Lincoln in May for the next module which covers Calcium Sulfate screeds.

Learners in this group are: Jordan Burgess, Scott Barclay (TPS360), Michael Gibbs and Thomas Henderson (Trent Construction Services)



## ONE DAY UPSKILLING TRAINING DAYS

The first of a series of three upskilling days on Specifying and Selecting Resin Flooring was held at Altro Floors in Letchworth this month. The delegates all found the day to be very interesting and useful. Two further days will be held in this series at Carlisle and Tamworth.

If you missed this opportunity and would like to attend a future date, please get in contact with FeRFA. We can also organise one day upskilling, subject to demand, on a number of topics including:

- Decorative Stone & Quartz Systems
- Flowable Screeds
- Self Smoothing Static Dissipative & Slip Resistant
- Polyurethane screeds & coving
- Work Practice & Project Planning
- Surface preparation to receive resin floors
- Grinding & Polishing

The cost is just £50 each (for FeRFA Members) which includes all training, course papers, lunch and refreshments. A certificate will also be issued on successful completion of the course.

You may also be eligible for grant funding of £50 (daily training plan rate). Details on claiming grant will be sent on booking together with joining details and invoice (to be paid prior to course date please).

## ASSOCIATE SPOTLIGHT

Each month we have a special focus on FeRFA Associate members who provide specialist services and products into the resin flooring and screeding markets. This month we are putting the spotlight on Innoveo and Schluter Systems.

## INNOVEO

Innoveo Limited is the sole agent of Dorfner in the UK & Ireland. Dorfner mines kaolin and crystalline quartz sand from their own deposits, and through a variety of highly sophisticated refining processes produces the finest quality industrial minerals. Our range of natural and coloured quartz sands and formulated filler systems are used in commercial and industrial resin flooring; in mortars, broadcasting and self levelling floors.



Our well-known brands include DORSILIT- Natural quartz sands, DORSIMIX - Filler blends for industrial screeds and self levelling floors, and GRANUCOL- Coloured quartz sands & blends. The sister company ANZAPLAN specialises in materials analysis and engineering services.

With its 120 year history at the forefront of the minerals processing technology Dorfner is the market leader with its consistent, reliable and innovative products that are highly regarded for their quality & functionality. In addition to our state of the art facility in Hirschau, Germany we are also able to deliver small lots with short lead times from our local storage and blending facility.

**6 Lancaster Road, Uxbridge UB8 1AW / [www.innoveo.co.uk](http://www.innoveo.co.uk) / 01895 232443**

## SCHLÜTER SYSTEMS LTD

Schlüter-Systems has been the market leader in essential accessories for resin, tile and stone installations since it was founded in 1966. With over 10,000 products in its range, Schlüter-Systems provides second-to-none edge protection, complete system-solutions and dedicated technical support, to ensure you have the perfect support, protection and decoration to your tiling project.



The specialist items for the resin industry include:

- transition profiles
- movement joint profiles
- coved wall connection profiles and
- drainage systems

Our products are supported by excellent technical advice and sales support, ensuring the correct solution for every installation. To find out how we can help you to create longer lasting installations that stay looking fantastic, contact us at:

**Units 3-5 Bardon 22, Beveridge Lane, Coalville, Leics LE67 1TEC / [www.schluter.co.uk/](http://www.schluter.co.uk/) / 01530 813396**

## FeRFA's RECYCLING SCHEME

### RECYCLING - ARE YOU TAKING PART?

With a new year just started, we are looking forward to what can be achieved in 2016 in respect of our recycling initiative.

FeRFA is simplifying the way it gathers waste statistics from members to maximise the opportunity for all members to submit data. We will be contacting every members with information and an easy-to-use template in the coming month.

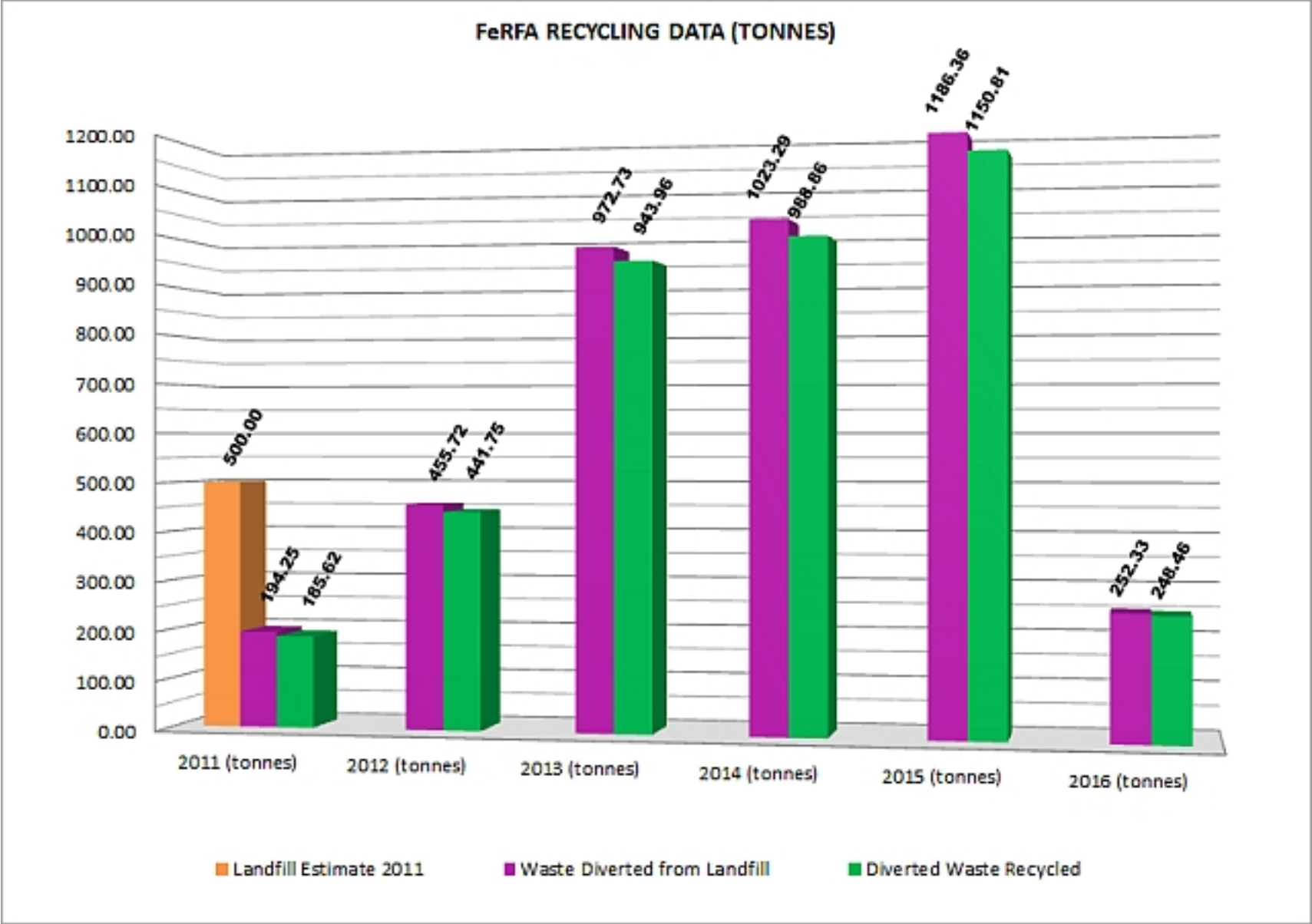
If you use [Reconomy](#) as your waste provider, you do not have to provide separate statistics.

Only those companies that provide waste statistics will be able to display the recycling logo with the company entry on the website.



If you are a manufacturer, FeRFA Recycling partner, [Protech Plastics Containers](#) can supply containers in various sizes to suit your product range, which are now produced from **40% recycled material**. Call Protech on 01827 314615.

More details on the recycling initiative are here: <http://www.ferfa.org.uk/recycling.php>



FeRFA's partner in the recycling scheme, Reconomy, can assist you to reduce your total waste management costs, increase your landfill diversion, ensure compliance, under current Environment Agency legislation, maintain consistency and best practice across all sites and back-office functions.

Members have a dedicated service team at Reconomy who will assist you with all of your enquiries and purchase orders. Service team members are:

- Marie Castle - FeRFA Business Development Executive
- Alyson Westbrook & Georgina Powell - FeRFA Key Account Team
- The direct telephone numbers for the team are 0800 834 133 and 01952 211790 (from mobiles)

## HAZARDOUS WASTE

The following documents on Hazardous Waste may be useful:

- Link for document from Reconomy on [Guidance on the classification of waste](#)
- Advice from the Environment Agency: [Guidance on the classification and assessment of waste \(1st edition 2015\). Technical Guidance WM3](#)
- Reconomy's [Guide to Hazardous Waste](#)

## FeRFA MEMBER BENEFITS

**FerFA is delighted to announce the launch of FerFA Business Shield in partnership with Stallard Kane Associates.**

FerFA Business Shield has been created to help FerFA members access professional, competent advice on Health & Safety and Employment Law matters at no extra cost.

The brochure explains the service that you are able to access but key benefits of FerFA Business Shield include:

- Access to a library of Health & Safety and HR documents and templates
- Unlimited telephone advice for Health & Safety
- Unlimited telephone advice for Employment Law

There is no limit to how frequently you can call either advice line and there is no restriction on the length of each call.

For more details of this free service please [see the brochure here](#).

FerFA members have been sent a unique username and password for the FerFA Business Shield website and then you will receive a courtesy call to answer any queries that you may have regarding FerFA Business Shield.

In the meantime, please feel free to commence using the advice line on 0345 076 6485. The dedicated FerFA Business Shield Account Manager is Barry Nicol and should you wish to speak to Barry at any time, you can contact him as follows: Email: [barry@skaltd.co.uk](mailto:barry@skaltd.co.uk) Tel: 07854 938693



## OTHER NEWS

### CSCS ANNUAL REVIEW 2015

The CSCS Annual Review takes a look back at the work carried out in 2015 and highlights its key priorities for 2016. You can [download a copy of the Annual Review](#).

### IS YOUR BUSINESS READY FOR THE NATIONAL LIVING WAGE?

The Government will introduce a new mandatory National Living Wage (NLW) for workers aged 25 and over from 1 April 2016. [Read more](#)

### FILING OF CIS RETURNS TO BE ONLINE ONLY

From 19 April 2016, it will be mandatory for all contractors to use the HM Revenue & Customs (HMRC) online service for their Construction Industry Scheme (CIS) returns. [Read more](#)

### BUILD UK STATE OF TRADE SURVEY

Following the successful launch of the [Build UK State of Trade Survey](#) earlier this year, we are asking members to complete the latest one.

The findings are extremely useful to Build UK when carrying out representation on your behalf and the results from the previous survey were covered by [CITB](#), [Construction News](#) and a [number of other trade publications](#). Build UK also contributes to the industry-wide quarterly State of Trade report compiled by the Construction Products Association (CPA).



**The Build UK State of Trade Survey can be completed online in a few minutes by clicking on the link below:**

**[Build UK State of Trade Survey – 2016 Q1](#) The deadline for responses is Friday 15 April 2016.**

The information provided by you will remain confidential to Build UK and a copy of the Build UK State of Trade Report for

2016 Q1 will be emailed all those who complete the survey.

More news for specialist contractors is in the Build UK [Newsline here....](#)

## INFORMATION FROM STALLARD KANE ASSOCIATES

Stallard Kane Associates Ltd provide a support service to the SME place for both Health & Safety and Employment Law. FeRFA members can access its services for free via the Business Shield - detailed above.



The latest news from SKA looks at:

### ➤ Refusing to work on health and safety grounds

One of your employees has just raised a minor concern regarding health and safety in your workplace. However, they also claim that they can't be forced to work until it's dealt with. Does such a legal right exist?

[Read more...](#)

### ➤ Are you up to speed with licence checks?

In June 2015 counterpart driving licences were abolished and the information became available online instead. What are the practicalities of using this system and is there anything you should watch out for? Are you up to date?

[Read more...](#)

## MEETINGS, SEMINARS AND EXHIBITIONS 2016

### EXHIBITIONS & EVENTS 2016

#### SURFACES & MATERIALS SHOW 2016

FeRFA is an event partner for the [Surfaces and Materials Show](#) to be held at NEC Birmingham from 18th to 20th October as part of UK Construction Week. FeRFA members are being offered enhanced packages and discounts on stands. For more details contact FeRFA on 07484 075254.



[GRAND DESIGNS LIVE](#) April 30-May 8 at ExCel London

[NORTH ENGLAND BUILD EXPO](#) April 27-28 at Manchester Central, Manchester

[VISION LONDON](#) June 7-8 at Olympia London

[FACILITIES SHOW](#): June 21-23 at Excel, London

[FLOORING SHOW](#): September 18-20 at Harrogate

[SURFACE & MATERIALS SHOW](#) October 18-20 at NEC Birmingham

[LONDON BUILD EXPO](#) October 26-27 at Olympia, London

**FMJ NETWORKING EVENTS** are on: [London](#) – 20th April, [Manchester](#) – 12th May, [London](#) (Facilities Show) – 22nd June, [Bristol](#) – 7th July and [Suffolk](#) – 5th October

### APPRENTICESHIP SCHEME DATES 2016

**Resin 14:** 20-21 April for Mod 14 at Instarmac, Tamworth, then Assessment Period

**Resin 15:** 4-5 May for Mod 11 at BASF, Redditch and 14-15 Sep for Mod 14 at Instarmac, Tamworth

**Resin 16:** May 17-18 for Mod 10 at PPC, Lincoln and then July 20-21 for Mod 11 at Sika, Welwyn Garden City

**Resin 17:** 6-7 April for Mods 1-3 at Ibis Hotel, Rugby East and then Jun 8-9 at Mapei, Halesowen

**Screed 1:** May 24-25 for Mod 12 at PPC, Lincoln and then Sep 14-15 for Mod 13 at Instarmac, Tamworth

### FeRFA MEETINGS AND EVENTS 2016

FeRFA Council Meeting: Wednesday 22 June

FeRFA Screed Technical Sub Committee Meeting: 15 June at 1.15 (joint lunch with Technical) at Rugby East

FeRFA Technical Meeting: Wednesday 15 June at 10.00 at Ibis, Rugby East (joint lunch with Screeds Committee)



# FeRFA MEMBERS' NEWS

---

FeRFA members can add news stories via the Members Area of the website. For more information on how to access this facility contact FeRFA.

Use the following links for more [COMPANY NEWS](#) or you can go to specific [CASE STUDIES](#) and [GALLERIES](#)



## [Dance Studio Refurbishment at Theatre Royal, Newcastle](#)

The show still went on at the Theatre Royal in Newcastle when Reprotec UK refurbished the dance floor with no disruption to the theatre's busy schedule. [Read more...](#)

**Reprotec UK**



## [Preparation Group's Open Days a great success](#)

The Open Days held by The Preparation Group at its Lincoln Training and Demonstration Centre to mark the company's 25th anniversary on 1st and 2nd March, were a great success. [Read more...](#)

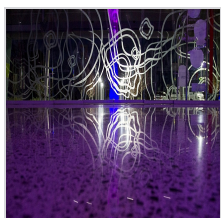
**The Preparation Group**



## [Kemtile keeps the cheese churning for dairy](#)

Installers of hygienic flooring solutions, Kemtile has further strengthened its dairy industry credentials with the installation of a BASF heavy duty polyurethane floor in the new extension at Colston Bassett Dairy in Leicestershire. [Read more...](#)

**Kemtile**



## [Enhance the beauty and strength of concrete floors with Husqvarna HiPERFLOOR](#)

Enhance the beauty and strength of concrete floors with Husqvarna HiPERFLOOR. [Read more..](#)

**Husqvarna**



## [Mainline Mouldings, Nottingham](#)

Mainline Picture Frame Mouldings is a Nottingham- based, family run company specialising in the supply of Polcore recycled polystyrene extruded moulding and wood moulding picture frames. [Read more...](#)

**Zenith Pola Flooring**



## [Anti-slip resin flooring for major car workshop](#)

TPS Flooring Solutions was appointed to create a safe and durable flooring for major workshop facility at Trade Centre Wales that would provide a non-slip solution to constant foot traffic and slow-moving vehicles. [Read more...](#)

**TPS360 Ltd**



## [Flowcrete UK Unveils New Flooring Systems Tailored to Overcome Challenging Application Issues](#)

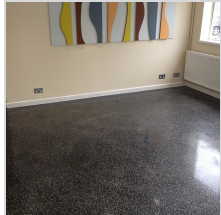
Flowcrete UK has launched a series of flooring solutions designed to create high performance, easy to install floors despite difficult installation conditions. [Read more...](#)

**Flowcrete**

---

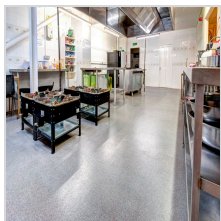
[A gloomy reception area gets a sparkling makeover from Kelray](#)





Kelray Ltd have transformed a dull reception area with a sparkling new decorative flooring solution. [Read more...](#)

**Kelray**



**[Temple seeks new flooring](#)**

The Central Gurdwara Manchester approached The National Flooring Company for advice on a durable and clean resin floor finish to its busy kitchen area. [Read more...](#)

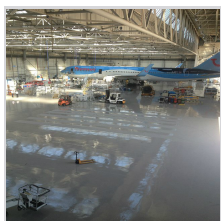
**The National Flooring Co Ltd**



**[Instarmac climbs 40 places and secures top honour for the 7th year](#)**

UK based manufacturer, Instarmac Group plc, has been recognised in The Sunday Times' annual 'Top 100 Best Small Companies To Work For' list for the seventh year. [Read more...](#)

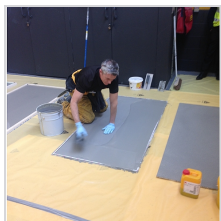
**Instarmac**



**[Thompson Airways gets new hangar floor at Luton Airport](#)**

IRL Group has completed a large project to upgrade the flooring for Thompson Airway's hangar 61 at Luton Airport. [Read more...](#)

**IRL Group Ltd**



**[Sika launches new flooring products at demonstration days](#)**

Sika, leaders in the development of innovative flooring systems, invited contractors to get to grips with its latest high-performing products at two hands on launch events. [Read more...](#)

**Sika**



**[Looking for work in the Resin Flooring Industry?](#)**

Visit the Situations Vacant page for details of the latest vacancies. If you are looking for work check the pages regularly and if you have a vacancy to advertise, get in touch with FeRFA. [See here...](#)

**FeRFA Situations Vacant**

**E-news published by FeRFA / 07484 075254 / [www.ferfa.org.uk](http://www.ferfa.org.uk)**

You are being sent this because you have subscribed to the FeRFA newsletter. To unsubscribe return the email with "unsubscribe" in the subject line.

FeRFA The Resin Flooring Association. 16 Edward Road , Farnham, Surrey GU9 8NP. T: 07484 075254  
Click this link to get to the FeRFA home page [www.ferfa.org.uk](http://www.ferfa.org.uk)