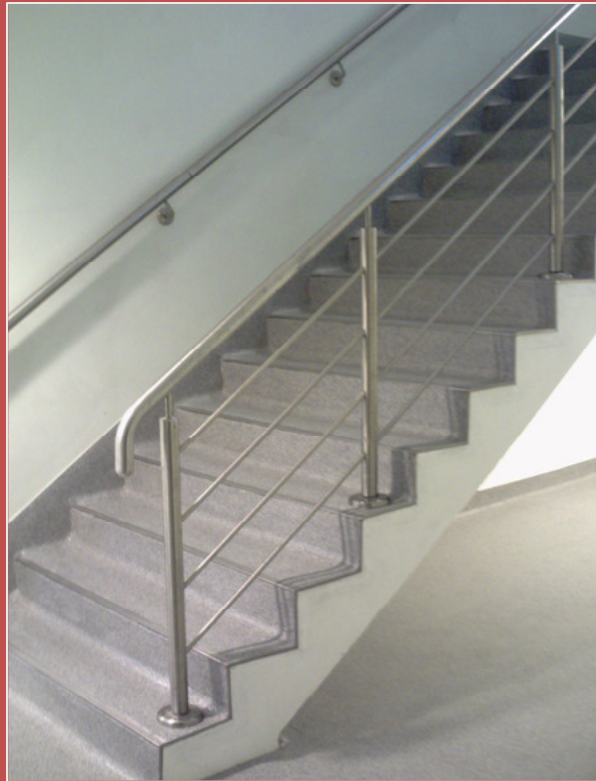


# Altroscreed Quartz to Nestle Lobby



**NIFL Resin Flooring  
successfully carried  
out a fast track  
decorative  
refurbishment for  
Nestle over  
Christmas 2008...**



**NIFL successfully installed 110m2 of Altroscreed Quartz, manufactured by Altro Resins, to entrance to a Nestle Production Facility.**

The programme was extremely tight, incorporating the removal of an existing flooring system, preparation of the substrate and re-instate of all coving trims, stair edges and stair treads in stainless steel, manufactured by Schluter Systems.

The programme was completed on time and the client was extremely happy with the finished result.

**FerFA Contractor of the Year 2006/2007  
Nominated Specialists Awards 2009**

**Manufacturer:** Altro  
**Products:** Altroscreed Quartz  
**Completion Time:** 5 Days

## **NIFL Resin Flooring**

Epoxy, Polyurethane and MMA Resin Flooring  
Resin Bound and Resin Bonded Surfacing

**t.** 01482 856162  
**f.** 01482 856168  
**e.** seans@nifl.co.uk

**Visit [NIFL.co.uk](http://NIFL.co.uk)!**

**NIFL**  
NIFL RESIN FLOORING