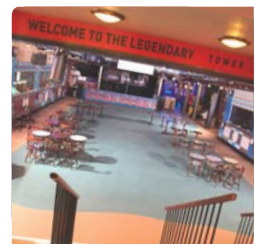
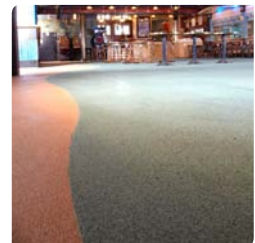
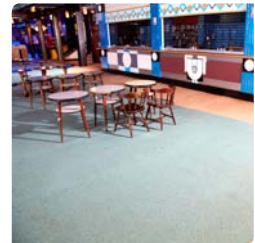


Flowcrete's Fast-Track Refurb at Blackpool Tower Lounge



• Product: Flowfast Quartz • Market Sector: Leisure • Location: UK • Client: The Tower Lounge
• Date: 2009

Flowcrete has provided a new floor for one of the UK's leading tourist attractions with an installation of its innovative two-hour flooring concept, Flowfast, at a trendy lounge bar located underneath the iconic Blackpool Tower.

The Tower Lounge, which has a capacity of 1400, is known for being one of the best party venues in town and has a renowned DJ Team playing the best tunes and games guaranteed to keep the party rocking all night long.

Having to withstand high volumes of foot traffic, stiletto heels, drinks spillage and the occasion bottle or glass breakage, the new floor finish for the bar area had to meet a number of performance requirements not least durability and slip-resistance.

The Tower Lounge opted for Flowcrete's MMA resin system, Flowfast Quartz. Not only able to be installed on the fast-track and provide a new floor finish under a quick turnaround so as to minimise any disruption to trade, Flowfast Quartz is also extremely hard wearing – delivering a joint-free finish that is easily cleaned and maintained.

Available in a creative mix of colours, Flowfast Quartz is made up of a blend of decorative quartz granules sealed within a clear resin binder. The finished floor, applied in a swirling pattern of green and red, is UV-stable, contains inherent antibacterial properties and comes complete with an adjustable anti-slip profile to ensure the health and safety of partygoers and visitors to the bar.