

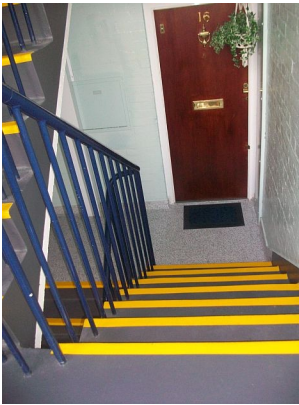
## **Flowfast Supports Social Housing Sector**

Flowcrete's two-hour flooring concept, Flowfast, is helping to transform environments in local authority and social housing multi-occupancy developments.

The seamless, hard-wearing and easy-to-maintain surface has already been installed at locations across London and the South East.

Flowcrete approved contractor Total Protection has undertaken the application in areas including Peckham, Wandsworth, Roehampton and Tower Hamlets. The company has been working on behalf of main contractor The Apollo Group.

Safety, aesthetics and durability have been the key drivers of the specification, along with minimal disturbance to residents and other people on site - due to the fact Flowfast is ready for use just two hours after application.



Used to refurbish entrances, walkways, stairwells and private balconies within a range of the buildings, Flowfast has replaced the existing tired concrete surfaces.

Flowfast's decorative quartz system, as well as Flowfast Terrosso - which delivers a terrazzo-like finish - have both been applied at the developments.

A bright yellow Flowfast coating has also been used on stair nosings, creating a protective coating that helps with safety by aiding both slip resistance and visibility.

Alan Blay, director of Flowfast systems at Flowcrete, said: "The refurbishment works have helped to dramatically improve the ambiance and overall appearance at the various locations."

Michael Morley of Total Protection, based in Stock, Essex, said: "The projects have gone well. Flowfast has been well-received, due to its fast installation and aesthetics."

Find out more at [www.flowcrete.co.uk](http://www.flowcrete.co.uk)

**6 May 2009**

Flowcrete UK Ltd  
The Flooring Technology Centre, Booth Lane, Moston, Sandbach, Cheshire CW11 3QF